



DuPage County Health Department R E V I E W

Volume 1, No. 1

October 2005



111 North County Farm Road
Wheaton, IL 60187
(630) 682-7400
www.dupagehealth.org

Linda Kurzawa
President, Board of Health

Leland Lewis, BS, MBA
Executive Director

Rashmi Chugh, MD, MPH
Medical Officer

Contact Information

Communicable Disease
(630) 682-7979, ext. 7553

Environmental Health
(630) 682-7979, ext. 7046

Immunizations
(630) 682-7400

Sexually Transmitted Diseases
(630) 682-7979, ext. 7575

HIV/AIDS
(630) 682-7979, ext. 7310

Tuberculosis
(630) 682-7522

School Health
(630) 682-7979, ext. 7300

Travel Clinic
(630) 682-7979, ext. 7590

Animal Control
(630) 407-2800

Please contact Shaun Nelson, MPH
at (630) 682-7979, ext. 7175 or
snelson@dupagehealth.org to
send suggestions or to be added
to the distribution list.

The purpose of this two-page surveillance update is to promote the control and prevention of **communicable disease (CD)** by providing clinically relevant information and resources to healthcare professionals in DuPage County.



Under the Microscope Influenza

Flu shots will be offered at the DuPage County Health Department beginning October 17th. For an appointment, call (630) 682-7400.

Influenza affects an average of 5-20% of the US population each year. *Annually, over 200,000 people are hospitalized and 36,000 people die of influenza and its complications.* Complications of influenza include pneumonia, worsening of chronic medical conditions (e.g., asthma, congestive heart failure, or diabetes), and death.

To ensure that those who are at highest risk of complications from influenza have access to vaccine this season, the Centers for Disease Control and Prevention (CDC) recommends that people in certain **priority groups** receive inactivated influenza vaccine (i.e., the "flu shot") **until October 24, 2005:**

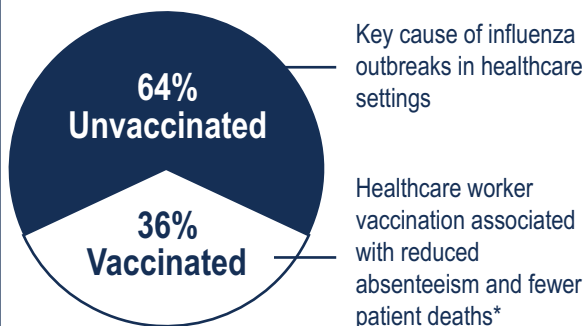
- people aged 65 years and older, with and without chronic health conditions
- residents of long-term care facilities
- people aged 2-64 years with chronic health conditions
- children aged 6-23 months
- pregnant women
- healthcare personnel who provide direct patient care
- household contacts and out-of-home caregivers of children less than 6 months of age

Pneumococcal Vaccine

The time of administration of influenza vaccine should also be used as an **opportunity to identify and vaccinate patients with pneumococcal vaccine.** Further information on pneumococcal vaccine recommendations are available at www.cdc.gov/nip/vaccine/pneumo/default.htm.

Beginning October 24, 2005, influenza vaccine should be made available to all persons.

Average Annual Influenza Vaccination Rates in Healthcare Workers



* Source: CDC Prevention and control of influenza: Recommendations of the Advisory Committee on Immunization Practices (ACIP). *MMWR*. 2003;52 (RR8): 1-34.

All healthcare workers should be vaccinated against influenza annually, and should also follow handwashing, respiratory hygiene, and other infection control recommendations to prevent influenza transmission.

Use of the Nasal Spray Flu Vaccine

It should be noted that vaccination with the nasal-spray flu vaccine is always an option for healthy persons aged 5-49 years who are not pregnant. This vaccine is not subject to prioritization and can be given to healthy 5-49 year olds at any time during flu season.

Avian Influenza A (H5N1)

In addition to providing protection against the predominant circulating influenza strain, vaccination with the most recent seasonal human influenza vaccine is intended **to reduce the likelihood of a healthcare worker's being co-infected with human and avian strains, where genetic rearrangement could take place, leading to the emergence of potential pandemic strain.**

CDC recommendations for healthcare professionals who may need to evaluate symptomatic persons with possible avian influenza exposure (including history of travel to a country with Type A H5N1 avian flu within 10 days) are available at www.cdc.gov/flu/avian/professional/han020405.htm. Highly pathogenic avian influenza A (H5N1) is classified as a select agent, and **virus isolation should not be attempted** unless a biosafety level (BSL) 3+ facility is available to receive and culture specimens.

Testing for avian influenza A (H5N1) should be considered **on a case-by-case basis in consultation with state and local health departments; to report a case of suspected avian influenza, call Communicable Disease Services at (630)682-7979, ext. 7553 or (630)682-7400 (24 hours).**

DUPAGE COUNTY HEALTH DEPARTMENT

CASES¹ OF REPORTABLE DISEASES*
Required by the Illinois Department of Public Health (IDPH)

* Last updated July 2002

Vaccine Preventable Diseases	Report Within	Sept 2005	2005			2004			2003		2002		2001		Median	
			Jan-Sept	Jan-Sept	Total	Jan-Sept	Total	Jan-Sept	Total	Jan-Sept	Total	Jan-Sept	Total	Jan-Sept	Total ('01-'04)	
Chickenpox in < 20 yr old	7 days	23	175	218	273	247	342	756	939	515	934	247	638			
Chickenpox in ≥ 20 yr old	24 hrs	0	5	10	13	9	10	24	27	NR ²	NR ²	10	13			
Diphtheria	24 hrs	0	0	0	0	0	0	0	0	0	0	0	0			
Haemophilus influenzae	24 hrs	0	9	5	5	4	4	8	11	4	7	5	6			
Hepatitis A	24 hrs	4	8	14	18	13	20	7	11	23	32	13	19			
Hepatitis B	7 days	1	5	7	8	10	12	12	14	11	15	10	13			
Hepatitis B (carriers)	7 days	13	115	114	144	111	136	139	199	202	268	115	172			
Measles	24 hrs	0	0	0	0	0	0	0	0	0	0	0	0			
Mumps	7 days	0	0	2	2	2	3	3	3	2	3	2	3			
Neisseria meningitidis	24 hrs	0	3	1	1	1	1	5	5	3	3	2	2			
Pertussis	24 hrs	1	18	82	125	8	11	8	11	5	10	8	11			
Poliomyelitis	24 hrs	0	0	0	0	0	0	0	0	0	0	0	0			
Rubella	7 days	0	0	0	0	0	0	0	1	0	0	0	0			
Streptococcus pneumoniae, invasive disease ³	7 days	2	51	39	54	47	97	46	62	26	51	46	58			
Tetanus	7 days	0	0	0	0	0	0	0	0	0	0	0	0			
Other Communicable Diseases																
Amebiasis	7 days	0	0	3	3	2	2	1	3	2	3	2	3			
Anthrax	3 hrs	0	0	0	0	0	0	0	0	0	0	0	0			
Blastomycosis	7 days	0	4	4	5	6	7	5	5	2	4	4	5			
Botulism, foodborne	3 hrs	0	0	0	0	0	0	0	0	0	0	0	0			
Botulism, other	24 hrs	0	0	0	0	0	0	0	0	0	0	0	0			
Brucellosis	7 days	0	0	0	0	0	0	1	1	0	0	0	0			
Campylobacteriosis ³	7 days	8	122	97	133	109	136	119	153	97	143	109	140			
Cholera	24 hrs	0	0	0	0	1	1	0	0	0	0	0	0			
Cryptosporidiosis	7 days	0	3	2	2	3	4	3	4	11	12	3	4			
Cyclosporiasis	7 days	0	1	26	26	0	0	0	0	0	0	0	0			
Diarrhea of the newborn	24 hrs	0	0	0	0	0	0	0	0	0	0	0	0			
Ehrlichiosis	7 days	0	0	0	0	1	1	0	0	0	0	0	0			
Encephalitis ⁴	7 days	0	4	0	0	0	1	2	2	3	6	2	2			
Enteric E. coli infections ⁵	24 hrs	0	14	18	21	3	5	19	24	12	16	14	19			
Giardiasis	7 days	0	33	40	65	66	88	48	71	51	74	48	73			
Glomerulonephritis	24 hrs	0	0	0	0	0	0	0	0	0	0	0	0			
Hantavirus pulmonary syndrome	7 days	0	0	0	0	0	0	0	0	0	0	0	0			
Hemolytic uremic syndrome	24 hrs	0	0	0	0	0	0	0	0	0	0	0	0			
Hepatitis C (cases & carriers) ³	7 days	22	177	140	188	145	193	183	224	78	157	145	191			
Hepatitis, viral, other ⁶	7 days	0	0	1	1	0	0	0	0	0	0	0	0			
Histoplasmosis	7 days	0	0	1	3	1	1	4	4	2	3	1	3			
Legionnaires' disease	7 days	0	3	4	5	6	8	2	5	3	3	3	5			
Leprosy	7 days	0	0	0	0	0	0	0	0	0	0	0	0			
Leptospirosis	7 days	0	1	0	0	0	0	1	1	0	0	0	0			
Listeriosis	7 days	0	2	1	1	1	2	0	0	1	1	1	1			
Lyme disease	7 days	0	9	12	14	6	9	6	8	1	3	6	9			
Malaria	7 days	0	3	4	5	4	4	3	3	2	2	3	4			
Meningitis, aseptic ⁴	7 days	16	91	122	154	128	174	83	122	45	137	91	146			
Ophthalmia neonatorum	7 days	0	0	0	0	0	0	0	0	0	0	0	0			
Plague	3 hrs	0	0	0	0	0	0	0	0	0	0	0	0			
Psittacosis	7 days	0	0	0	0	0	0	0	0	0	0	0	0			
Q fever ⁷	3 hrs	0	0	1	1	0	0	1	1	0	0	0	0			
Rabies, human case	24 hrs	0	0	0	0	0	0	0	0	0	0	0	0			
Rabies, potential exposure	24 hrs	0	18	16	18	10	10	26	26	8	11	16	16			
Reye syndrome	7 days	0	0	0	0	0	0	0	0	0	0	0	0			
Rheumatic fever	24 hrs	0	0	0	0	0	0	0	0	0	0	0	0			
Rocky Mountain spotted fever	7 days	0	0	0	1	0	0	0	0	0	0	0	0			
Salmonellosis	7 days	3	88	86	122	81	99	82	111	73	93	82	105			
Shigellosis	7 days	5	21	9	15	38	44	25	41	22	32	22	37			
Smallpox	3 hrs	0	0	0	0	0	0	0	0	0	0	0	0			
Staphylococcus aureus (infants)	7 days	2	2	3	4	2	2	1	1	0	0	2	2			
Staphylococcus aureus (vancomycin resistance)	24 hrs	0	0	0	0	0	0	0	0	0	0	0	0			
Streptococcal infections, group A invasive	24 hrs	2	5	19	19	21	22	9	12	18	21	18	20			
Streptococcal infections, group B invasive <3mos	7 days	0	3	1	1	2	3	1	1	0	0	1	1			
Toxic shock syndrome ⁸	24 hrs	0	2	0	0	4	4	2	2	2	2	2	2			
Trichinosis	7 days	0	0	0	0	0	0	0	0	0	0	0	0			
Tuberculosis	7 days	2	35	38	50	46	67	26	33	31	46	35	48			
Tularemia	3 hrs	0	0	0	0	0	0	0	0	0	0	0	0			
Typhoid fever	24 hrs	1	2	1	1	1	1	1	3	2	3	1	2			
Typhus	24 hrs	0	0	0	0	0	0	0	0	0	0	0	0			
West Nile disease	7 days	10	41	5	5	3	4	39	44	0	0	5	5			
Yersiniosis	7 days	0	2	2	2	0	0	0	1	2	2	2	2			
STDs, HIV and AIDS																
AIDS	7 days	0	23	16	20	27	34	32	45	19	25	23	30			
Chancroid	7 days	0	0	0	0	0	0	0	0	0	0	0	0			
Chlamydia	7 days	143	943	706	948	655	939	648	904	590	837	655	922			
Gonorrhea	7 days	18	142	171	210	156	209	169	234	176	230	169	220			
HIV infection	7 days	8	40	32	38	35	45	25	37	16	22	32	38			
Syphilis	7 days	4	11	6	9	17	18	6	10	4	10	6	10			

CD REVIEW
Volume 1, No. 1 October 2005

DuPage County healthcare providers and hospitals must report any suspected or confirmed case of these diseases to the local health authorities within the number of hours or days indicated.

REPORTING NUMBERS:

Communicable Diseases
(630) 682-7979, ext. 7553
24 hours: (630) 682-7400

Tuberculosis
(630) 682-7522

STDs
(630) 682-7979, ext. 7575

HIV/AIDS
(630) 682-7979, ext. 7310

- 1 Provisional cases, based on onset dates
- 2 Not reported
- 3 Disease not reportable until April 2001; data do not include cases from Jan 1, 2001 through March 31, 2001.
- 4 Excludes West Nile disease
- 5 0157:H7, STEC, EHEC, ETEC, EPEC
- 6 Includes hepatitis D and E
- 7 Q fever cases in 2002 and 2004 not related to any suspected bioterrorism threat or event
- 8 Includes streptococcal (reportable within 24 hours) and presumed staphylococcal (reportable within 7 days)

Websites:

CDC
www.cdc.gov

IDPH
www.idph.state.il.us

DuPage
www.dupagehealth.org